



**South Devon
National
Landscape**

Peter Sandover
Chair
South Devon National Landscape

petersandover@icloud.com
07967 145728 / 01548 532818

c/o Follaton House, Plymouth Road,
Totnes, TQ9 5NE

www.southdevon-nl.org.uk



Presentation to Parish and Town Councils

Introduction

- We have been re-named a National Landscape; giving more profile and weight, So I will be talking about the South Devon National Landscape. and part of a family of NLs (46)
- Covers over 60 miles of coast, From Brixham (Elberry Cove) to Wembury
- 3-5 miles inland and up the 5 estuaries and Rias and much more.
- It is a Protected Landscape, one of a family; National Parks and Trails.
- The single and recently enhanced **statutory purpose** of the National Landscape designation is 'must seek to further the purpose of conserving and enhancing the natural beauty of the AONB (National Landscape)'. This is a duty of all Relevant Authorities including Parish and District Councils -not just the NL, a shared responsibility. I am sure you will agree that our National Landscape is distinctive and is worth conserving and enhancing.
- Consultee to LPA (not a statutory consultee) Planning Protocol (Updated June 2023)

National Landscapes are living and working landscapes. Maintaining thriving local communities (and their economy) is essential to their long-term future. Accommodating development that meets the needs of local communities plays an important role.

We recognise the challenge that development within the National Landscape and its settings has the potential to significantly harm the area's natural beauty.

Three strands to the National Landscape:

- The designation.
- The Partnership; combination of funders, 4 Local Authorities, community groups , Government Agencies and NGOs and all those interested in conserving and enhancing our National Landscape. Our Parish Council representative on the Partnership is Peter Hinchliffe.
- The core staff team (numbers 6 including a manager) overseen by the Partnership, this team is expanding to run extra projects particularly the Life on the Edge currently 6 and 3 apprentices starting shortly.
- We do not own any land.

Key tools to help us; Management Plan and Design Guidance (2019-2024). The MP is soon to be updated, and we plan to engage you in this process.**National**

planning legislation (NPPF) and guidance governing AONBs (National Landscapes) and the Countryside and Rights of Way Act.

- The recent Levelling Up and Regeneration Action adds planning and plan making obligations as well as that enhanced duty.
- We can expect more changes in planning in the coming months from the new government including; revisions to the NPPF covering housing growth, economic growth, grey belt land, energy and support to create healthier communities.
- There is a separate Estuaries Partnership
- Core Funding around £230k, (mostly from DEFRA 75% (maximum) rest from 4 Local authorities
- In addition, there is also project funding which varies each year currently around £1.5M (mostly from DEFRA (FiPL and LotE)

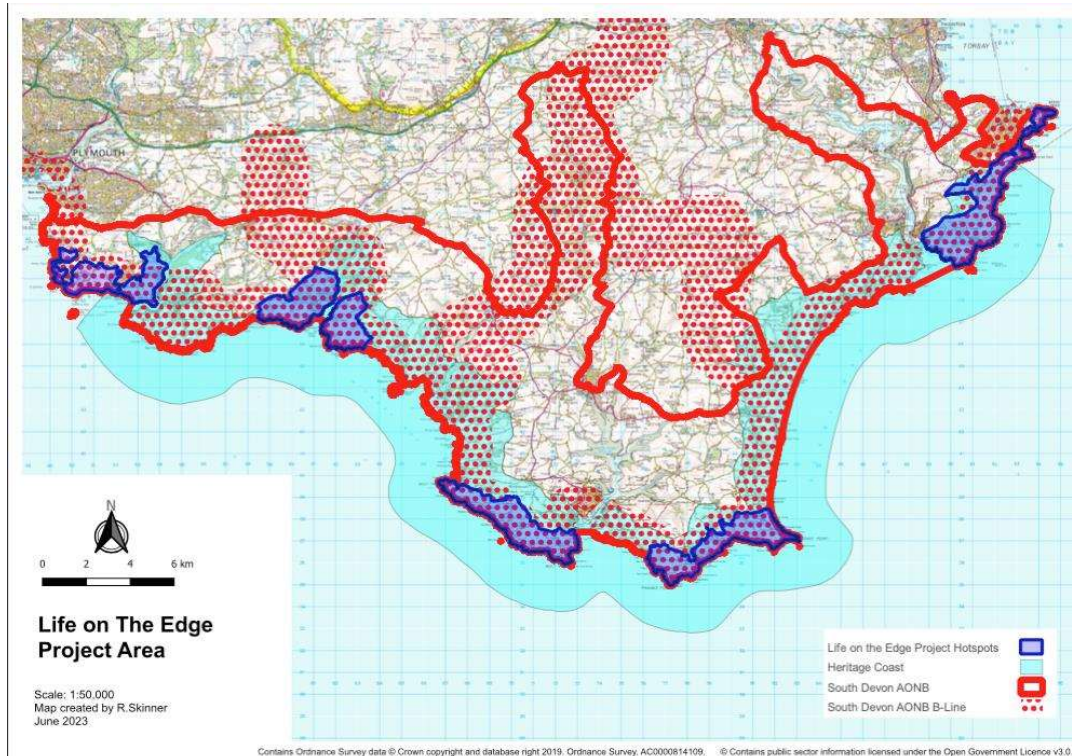
Key projects/ priorities the National Landscape is engaged on:

- **National Lottery Funded Life on the Edge, our Flagship project;**



Our strip of coast is home to the greatest concentration and one of the most diverse range of plant and invertebrate species in Devon, thanks to our warm climate, unique geology and long history of low intensity farming, but many of these species are now in trouble. So this project sets out to -Protect and enhance our (rich) biodiversity; we have just completed the 18 month development phase and after approval of funds have progressed to the project phase (worth around £4M over 5 years) Working with landowners, ecologists and meadow experts to restore populations of the rarest insects in South Devon over 20 threatened with extinction, expanding habitats e.g. wildflower rich meadows. One of the rarest bumble bees the Brown Banded Carder Bee has been re-discovered at Prawle Point.

We have two grants available: up to £2000 to support **community activity and engagement** and **Conservation and Management Grants** up to £5000 to all landowners and land managers (including farmers, Parish Councils, Community Groups, schools and tourism destinations) Our target audiences are residents, visitors and landowners and in particular older isolated people and young people disconnected with nature. Our strategic objectives include **reconnecting** communities with nature, improving **health and wellbeing**, **empowering** people to make a real contribution to nature, **restoring** resilient populations of rare invertebrates and plants and **enhancing** the whole National Landscape. One of our targets is to facilitate a network of over 1.300 ha of nature friendly farmland connected through 'B Lines' to Biodiversity Hotspots (see map below)



- **Nature Recovery Plan for the National Landscape** linked to Devon Local Nature Recovery Strategy (by DCC) 30% of our land and sea connected for nature recovery by 2030 (30 x30).
- **Preparing a Climate Action Plan** for the NL linked and coordinated with the Devon Carbon Plan and other NLs.

Year 3 Farming in Protected Landscapes DEFRA Funded Grant Programme. funding until 2025, focus themes on climate, nature, people and place Includes Historic Building Restoration Grant, recently awarded over £300K for repairs, preservation and restoration works.

- **Other Heritage Projects** working with HE, NT, NE, SWCPA, to protect and celebrate heritage assets currently focusing on Bolt Head to Bolt Tail and Dart Entrance.
- **Improved access**, physically (South Milton and Wembury) and virtually with a more accessible website.
- **Undergrounding power cables** funded by Western Power Distribution (now National Grid)
- **Heritage Coast Review**, conserve, protect and enhance, SD one of 32 first defined for South Devon in 1984 first review since 2005.

Peter Sandover Updated 28 /1/25